

Steven M. Clouse WRC Primary Clarifier Rehabilitation Project

Eric Eckols P.E.

Project Engineer

Stella Manzello

Contract Administrator

Marisol V. Robles

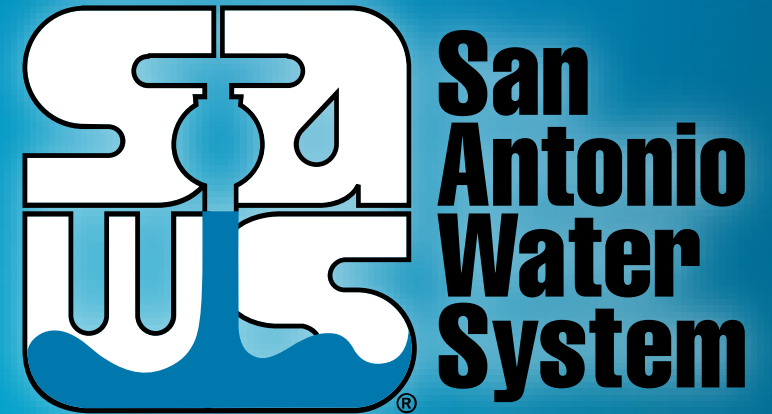
SMWVB Program Manager, SAWS

Javier Garcia, P.E.

Project Engineer of Record, GIC

Gaspar Garcia, P.E.

Project Engineer of Record, LAN



Mandatory Pre-Bid Meeting

August 27, 2021 – 10:00 AM

MAKING SAN ANTONIO
WATERFUL

The 'WaterFUL' logo features the word 'WATERFUL' in a large, white, serif font. A small, blue-tinted glass of water is integrated into the letter 'U'. The background of the logo is a cross-section of the earth showing brown soil, green grass, and several blue pipes running horizontally and vertically through the ground.

Oral Statements

Oral statements or discussion during the pre-bid meeting today will not be binding, nor will it change or affect the terms or conditions within the Plans and Specifications of this Project. Changes, if any, will be addressed in writing only via an Addendum.

Agenda

- General Information
- SMWVB Requirements
- Contract Solicitation Website – Recent Changes
- Vendor Registration
- Key Reminders
- IFB Schedule
- Bid Packet Preparation
- Contract Requirements
- Project Overview
- Statement of Bidder's Experience
- Special Conditions
- Supplemental Conditions
- Project Details

General Information

- This is a Mandatory pre-bid meeting
- Attendees should sign-in via chat on WebEx
- This presentation and the attendance sheet will be posted to the SAWS website
- Key project information:
 - Construction duration is 648 calendar days
 - Construction estimate \$8,569,000.00
- Construction services being procured through IFB

Aspirational SMWB Goal

Industry	Aspirational SMWB Goal
Construction	20%

The aspirational SMWB goal is 20% of your total bid price.

Accepted SMWB Certification Agency

- **South Central Texas Regional Certification Agency**

(Includes the Texas Historically Underutilized Business “HUB” Program, MBE, WBE, SBE)

Minimum Qualifications for SMWB recognition:

- SBE-Certified (even MBEs and WBEs)
- ***Local office or local equipment yard***

Good Faith Effort Plan (GFEP) FAQs

- **Q: Is the 20% SMWB goal mandatory?**
A: No, but we ask prime contractors to do their best with good faith outreach efforts. If the goal is not met, proof of outreach efforts is required with the submittal.
- **Q: What if I am having trouble finding SMWB subcontractors?**
A: Please email the SMWB Program Manager with the scopes of work you are seeking. You will receive lists of local SMWB-certified firms to contact.
- **Q: What if my business is SMWB-certified? Do I need to find SMWB subs?**
A: If your firm is SMWB-certified, you will most likely meet the goal. However, the GFEP is a required document, and a good faith outreach effort is still necessary.
- **Q: Do I need to include all my subcontractors in the GFEP or just those that qualify towards the SMWB goal?**
A: All subcontractors need to be included in the GFEP, even those that may not count towards the SMWB goal.
- **Q: What if I have questions about the GFEP?**
A: Please contact the SMWB Program Manager at 210-233-3420, or at Marisol.Robles@saws.org . GFEP questions can be asked at any time before the submittal is due.

Post Award: Subcontractor Payment & Utilization Reporting (S.P.U.R.) System

1. Subcontractor & Supplier Payment Tracking
2. Subcontractor and Supplier Additions or Substitutions
3. LCP Tracker
4. Must be Current and Accurate before Retainage is released

<https://saws.smwbe.com>



San Antonio Water System

OUR MAIN SITE CONTACT SUPPORT

Subcontractor Payment & Utilization Reporting System

Log In

System Training
Learn how to fully utilize our system with a live trainer
Training

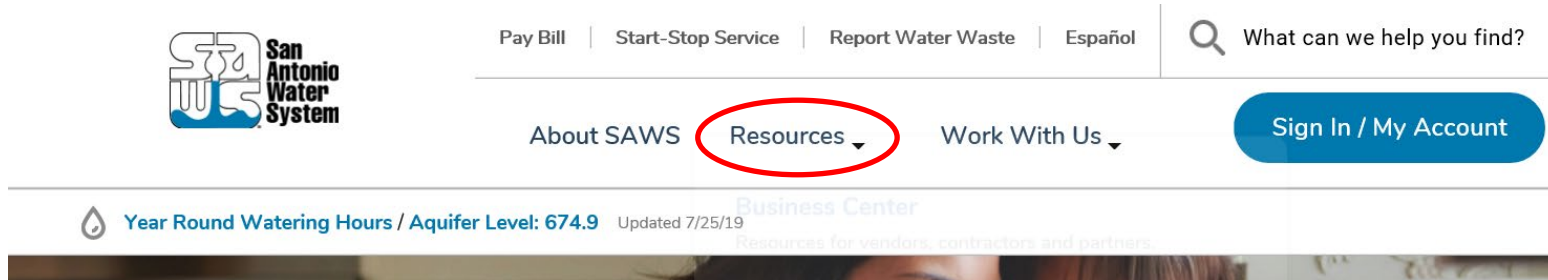
About the System
Learn more about this system and how it works today
Information for Vendors

Account Access
Lookup Vendor accounts or reset user passwords
Account Lookup
Forgot Password

The Subcontractor Payment & Utilization Reporting System is powered by B2Cnow Software © Copyright 2018.

Contract Solicitations Website – Recent Changes

- To locate the Contract Solicitations website choose Resources



- At the drop down menu choose Contract Solicitations



Contract Solicitations Website – Recent Changes

- Choose the specific project
- The following buttons are now located under the advertisement:
 - Notify Me
 - Plan Holder's List
 - Downloads
 - Plans
 - Specs
 - Addendums
 - Geotechnical Data Report



The screenshot displays a project advertisement for a "Non-Mandatory Pre-Bid Meeting" on August 6, 2019. The advertisement includes the following details:

- Event:** Non-Mandatory Pre-Bid Meeting
- Date:** 10:00 AM, Tuesday Aug. 6, 2019
- Location:** San Antonio Water System Customer Service Building, 2800 U.S. Hwy 281 N, San Antonio, Texas 78212; Conference Room CR-C145

Below the advertisement, there are three main sections:

- Notify Me:** A section with a megaphone icon and a "Subscribe" button. Text: "Receive updates sent straight to your inbox."
- Plan Holders List:** A section with a group of people icon and a "View List" button. Text: "View plan holders list."
- Downloads:** A section with two links: "Specifications" (dated Jul. 31, 2019) and "Plans" (dated Jul. 31, 2019). Both links have a note: "Note: You must be logged in to access this document." Each link is accompanied by a PDF icon with a lock symbol.

Vendor Registration & Notification (VRN)

- Please register through SAWS Vendor Registration Program on the SAWS website at www.saws.org to ensure access to the latest information.
- To receive updates on specific projects, registered vendors must 'Subscribe' to the project by selecting the project, and clicking 'Subscribe' under the Notify Me box.

https://apps.saws.org/Business_Center/Contractsol/



Notify Me

Receive updates sent straight to your inbox.



Subscribe

Key Reminders

- All questions should be sent in writing to the corresponding Contract Administrator by email or fax.
- Please identify the project by its associated solicitation number.
- Contractors should not contact the SAWWS project engineer, the consultants for this project, or any other SAWWS staff up until Board award.
- Late bids will not be accepted, and will be returned unopened.
- Due to the COVID-19 emergency and to protect the health of the public, SAWWS is implementing new procedures for the submission of bids.
- Bids will be received either Electronically or through Sealed bids.
- Electronic bids will be received via the secure SAWWS FTP site.
- Sealed bids will be received by Contract Administration, 2800 U.S. Hwy 281 North, Tower II, Customer Center Building, via a drop box located on the left wall when walking through the first set of double glass doors of the main Tower II entry on the north side of the building.
- If bids will be delivered in person to SAWWS, Bidders should allow sufficient travel time.

IFB Schedule

Questions Due

Thursday – September 2, 2021
4:00 PM(CT)

Bids Due

Thursday – September 16, 2021
1:00 PM (CT)

Answers Posted

Wednesday – September 8, 2021
4:00 PM (CT)

**Board
Award**
November
2021



Bid Packet Preparation

- Utilize the Bid Packet Checklist within the specifications
 - All items due with the bid
- Double check all mathematical calculations and verify all extensions
- Addendums are acknowledged on the Bid Proposals
- Ensure Mobilization & Prep ROW Line Item does not exceed the percentage allowed
- References and contact information must be verified prior to submitting bid(s)

Contract Requirements

Prevailing Wage Rate and Labor Standards – Section 2.10 of the General Conditions

- Certified payroll to be submitted on weekly basis
- Wage decisions are included within the specifications
- Contractors to utilize LCP Tracker
- Site visits are random and unannounced
- Interviews will be Conducted and will be private & confidential
- Payroll records are subject to review
- All apprenticeship programs will need to be approved by Department of Labor prior to starting
- Contractors are responsible for sub-contractor payroll
- Late payrolls delay contractor payments from SAWS

Contract Requirements

- Insurance requirements are found in Section 5.7 of the GCs
 - Pollution Liability & Installation Floater is required
 - Maintain insurance coverage during the construction of this Project
- Compliant prior to executing the contract
- Will ask for insurance prior to Board award to expedite execution of the contract
 - Any deficiencies must be corrected prior to Board award

Mandatory Site Visit

- August 27, 2021 at 1:00PM
- Site Visit duration – 1 hour
- No Q&A during site visit
- COVID-19 protocols enforced (mask, temperature check, social distancing)
- Visitors to wear proper PPE
- Coordinate site visit in advance with Stella Manzello

Contact Information

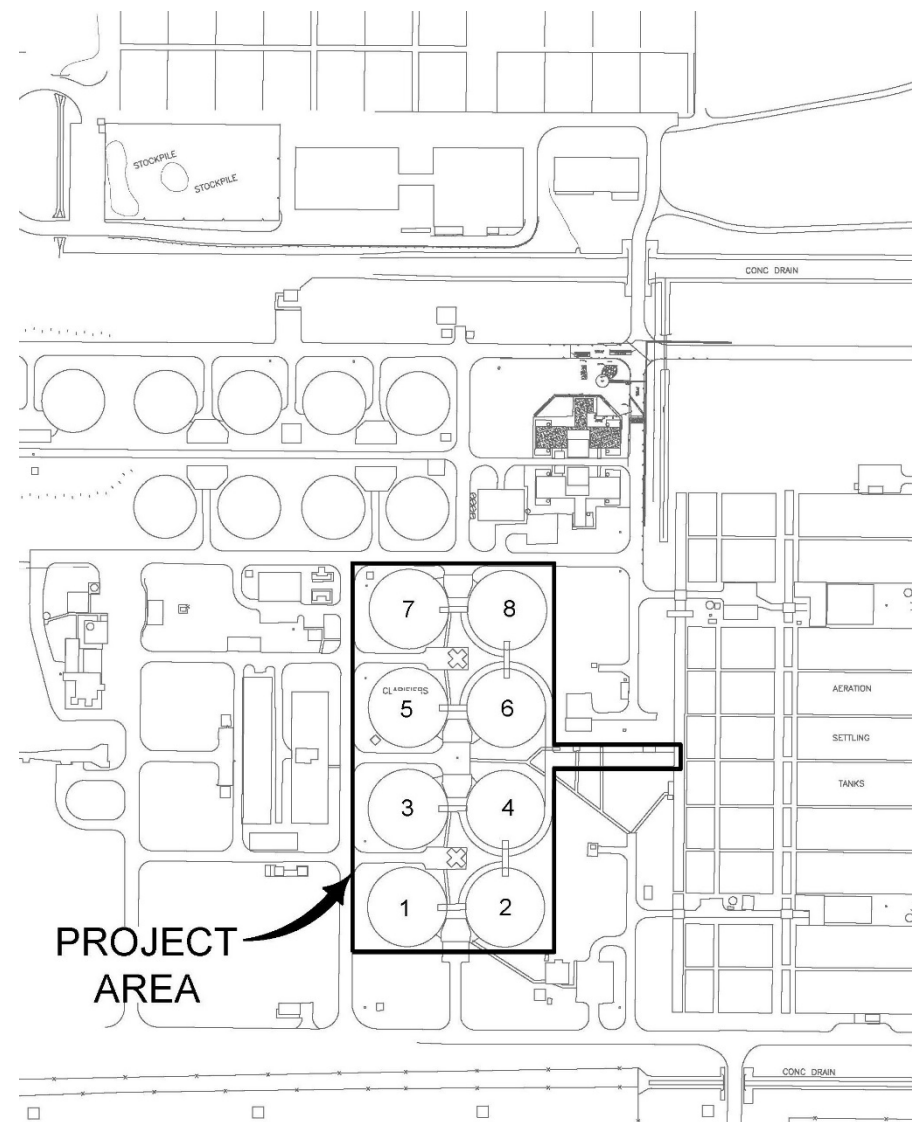
<u>Contact Name</u>	<u>Title</u>	<u>Telephone Number</u>	<u>Email address</u>
Stella Manzello	Contract Administrator	210-233-3854	Stella.Manzello@saws.org
Marisol V. Robles	SMWVB Program Manager	210-233-3420	Marisol.Robles@saws.org

Project Overview

Rehabilitation of Primary Clarifier Nos. 1 to 5, and 8.

Modifications to Primary Clarifier Nos. 6 and 7.

Remove and Replace Primary Clarifier Effluent Channel Covers and Coarse Bubble Diffuser System.



Project Overview (contd.)

Scope of Work (Clarifier No. 1 to 5 and 8)

1. Sandblast to near white finish and coat the following components:
 - Rake arm, influent column, and feed well and associated supports.
2. Pressure wash clarifier walls and floors including the effluent trough and drop box.
3. Repair the following components:
 - Effluent drop box walkway; Cut section of the concrete support structure at the effluent drop box.
4. Remove, dispose of, and replace the following components:
 - Bridge/walkway; gusset plates, center well angle brackets; drop box walkway support channels/beams; scum box, scum box discharge pipe (6-inch), and flush line; combined scum box and primary clarifier water spray piping, nozzles, and associated valves; skimming arms; scraper blade squeegees; scum baffle plate; flat weirs with v-notch weirs (3 sets); primary clarifier control panel; all electrical conduits and conductors; Replace all lights with LED lights; remove dual drive units for refurbishment by SAWWS and re-install.
5. Level clarifier squeegees and skimming arm after new weirs and scum baffle plate are replaced.

Project Overview (contd.)

Scope of Work (Clarifier No. 6)

1. Remove, dispose of, and replace the following components:
 - Flat weir plates with v-notch weir plates (3 sets) and primary clarifier control panel
2. Provide the following item(s)
 - Modify existing scum box spray water system to add a secondary water spray water system.
 - Level clarifier squeegees and skimming arm after new weirs are replaced.
 - Weld all existing bolted connections after clarifier is leveled.

Scope of Work (Clarifier No. 7)

1. Remove, dispose of, and replace the following components:
 - Flat weir plates with v-notch weir plates (3 sets) and primary clarifier control panel
2. Provide the following item(s):
 - Modify existing scum box spray water system to add a secondary water spray water system

Other Work

1. Remove, dispose of, and replace primary clarifier effluent channel covers from the effluent drop box to the 1st stage aeration basin.
2. Remove, dispose of, and replace primary clarifier effluent channel coarse bubble diffuser system.

Project Overview (contd.)

Electrical and I&C - Clarifiers 1-5 and 8:

- Remove and replace clarifier dual drive control panels.
- Remove and replace stanchion light and GFCI duplex receptacle at clarifier drive platform.
- Remove and replace above grade conduits, power conductors back to source, instrumentation conductors back to source that are associated with replacement of drive control panels, stanchion lights, and duplex receptacles.

Project Overview (contd.)

Electrical and I&C - Clarifiers 6 and 7:

- Remove and replace clarifier dual drive control panels.
- Remove and replace above grade conduits, power conductors back to source, instrumentation conductors back to source that are associated with replacement of drive control panels.

Electrical and I&C - Clarifiers 1- 8:

- Remove level transmitter.
- Remove above grade conduits and instrumentation conductors back to source that are associated with removal of level transmitter.

Project Overview (contd.)

Suggested Work Sequence

- Owner will dewater each Primary Clarifier.
- Contractor will empty wastewater/standing water remaining in Primary Clarifier.
- Contractor will pressure wash floor and walls.
- Continuous uninterrupted operation of the SMC WRC is required, and no disruption of service shall be allowed.
- Maintain access to all existing facilities during construction.
- No more than two (2) Primary Clarifiers will be allowed to be offline at any time.
- Work shall commence on Clarifier No. 3 first.
- Replace effluent chamber covers and diffusers.
- Owner may need to take a Primary Clarifier out of service for emergency corrective maintenance outside Contractor's construction sequence.

Project Overview (contd.)

Statement of Bidder's Experience

To be considered responsive, Bidder must list a minimum of Three (3) similar projects that include the following:

- Completed during the last Ten (10) years.
- Involved Wastewater Treatment Plants with a minimum 20 MGD capacity.
- Project Scope included:
 - Demolition/Decommissioning
 - Clarifier Rehabilitation
 - Electrical, and
 - Start-up, Commissioning, and Training

Project Special Conditions

- SC2- Use and Store all construction related documents on CPMS.
- SC5- Contractor shall be responsible for protecting existing features during construction.
- SC9- Clarifier equipment has been pre-selected (Ovivo USA) to ensure compatibility with existing equipment.
- SC11- Existing WRC and process shall remain in operation at all times.
- SC13- Contractor to cooperate and coordinate its work with SAWWS Operations.

Project Supplemental Conditions

- Liquidated Damages assessed at \$614/day

Project Details – Primary Clarifier Demolition Plan

LEGEND

EQUIPMENT TO BE REMOVED/DEMOLISHED AND REPLACED

NOTES:

- THIS DRAWING IS A REPRODUCTION OF THE EXISTING DOS RISK WASTEWATER TREATMENT PLANT DRAWINGS AND IS INTENDED TO PROVIDE GENERAL INFORMATION FOR FACILITY DEMOLITION AND MAY NOT FULLY REFLECT ALL SITE EQUIPMENT AND APURTANCES. REFER TO SITE PHOTOGRAPHS AS NECESSARY. FIELD VERIFY ALL ITEMS SHOWN OR NOT SHOWN ON THIS DRAWING.
- THE BASE DRAWING FOR THIS SHEET IS NOT TO SCALE.
- REMOVE AND DISPOSE OF FOLLOWING CLARIFIER MECHANICAL COMPONENTS:
 - SCUM BOX
 - SCUM BOX 6" PIPE
 - SCUM BOX WATER SPRAY PIPING AND NOZZLES
 - SPINNING ARM AND SUPPORT
 - SCRAPER BLADES AND STAINLESS STEEL SQUEEZES
 - CLARIFIER BRIDGE/WALKWAY
 - WEIRS
 - SCUM BAFFLE PLATE
- REPLACE THESE COMPONENTS (REFER TO MECHANICAL SHEETS)
- COORDINATE ALL DEMOLITION ACTIVITIES WITH SAWS INSPECTOR AND OPERATIONS. MAINTAIN UNINTERRUPTED SERVICE AT ALL TIMES. NOTIFY SAWS OPERATIONS AT LEAST 7 DAYS IN ADVANCE AND AGAIN 3 DAYS PRIOR TO ANY SHUTDOWNS.
- PLANS WERE PREPARED WITHOUT THE BENEFIT OF A FIELD SURVEY. ALL DIMENSIONS AND ELEVATIONS ARE FROM RECORD DRAWINGS. FIELD VERIFY ALL DIMENSIONS AND ELEVATIONS SHOWN OR NOT SHOWN ON THE PLANS. PRIOR TO FABRICATING EQUIPMENT, NOTIFY ENGINEER OF ANY DISCREPANCIES.
- ANY DAMAGE TO CONCRETE OR ITEMS TO REMAIN DURING CONSTRUCTION SHALL BE FULLY REPAIRED TO SAWS' SATISFACTION AT CONTRACTOR'S EXPENSE.
- ALL EQUIPMENT DESIGNATED FOR DEMO, UNLESS SPECIFICALLY NOTED, SHALL BECOME CONTRACTOR'S PROPERTY. CONTRACTOR IS FULLY RESPONSIBLE FOR THE PROPER REMOVAL AND DISPOSAL OF ALL ITEMS IN ACCORDANCE TO LOCAL, STATE, AND FEDERAL REGULATIONS.
- PRESSURE WASH ALL WALLS AND FLOOR INCLUDING THE EFFLUENT TROUGH SCUM BOX, AND EFFLUENT BOX.
- CONTRACTOR TO FIELD VERIFY LOCATIONS OF PIPING, ELECTRICAL, CONDUITS AND OTHER UTILITIES PRIOR TO REACH WORK.
- UNLESS OTHERWISE NOTED, THIS DRAWING IS INTENDED TO REFLECT WORK AT PRIMARY CLARIFIERS No. 1-5 AND No. 8.
- TYPICAL PLAN SHOWN FOR ONE (1) PRIMARY CLARIFIER. SAME WORK APPLIES AT PRIMARY CLARIFIERS No. 1-5 AND No. 8.
- OWNER SHALL ASSIST IN DRAINING EACH PRIMARY CLARIFIER. ASSISTANCE IS LIMITED TO OPERATING SLUICE GATES AT PRIMARY SETTLING TANK DISTRIBUTION CENTER AND UTILIZING PRIMARY SLUDGE PUMPS.
- APPROXIMATELY 6 TO 12 INCHES OF STANDING WATER, SLUDGE, GRIT AND DEBRIS WILL REMAIN AFTER OWNER DRAINS CLARIFIER. IN ADDITION, THE CENTER COLUMN IS FULL OF WASTEWATER. IT IS CONTRACTOR'S RESPONSIBILITY TO DISPOSE OF ALL REMAINING WATER, SLUDGE, AND GRIT IN EACH PRIMARY CLARIFIER AT CLARIFIER SPLITTER BOX UNDER SAWS' DIRECTION. ANY DEBRIS REMAINING SHALL BE CONTRACTOR'S RESPONSIBILITY TO DISPOSE OF AT CONTRACTOR'S EXPENSE.
- REFER TO SPEC. SECTION 08800 FOR SURFACE PREP AND COATING.
- REPAIR AND GROUT CONCRETE FLOOR SURFACE AS NECESSARY PRIOR TO STARTING UP PRIMARY CLARIFIERS.
- REMOVE EXISTING DUAL CLARIFIER DRIVE UNITS AND SET AT A DESIGNATED LOCATION AS DIRECTED BY SAWS. DRIVE UNITS SHALL BE REBARED BY SAWS. CONTRACTOR SHALL BE RESPONSIBLE FOR PRESSURE WASHING AND COATING DRIVE UNITS UPON COMPLETION OF REBARS BY SAWS. CONTRACTOR SHALL RE-INSTALL DUAL DRIVE UNITS. CONTRACTOR TO COORDINATE SCHEDULE WITH SAWS. PROPERLY COVER BULL GEAR DURING SAND BLASTING AND COATING WORK TO PROTECT BULL GEAR. MUST BE INSPECTED AND APPROVED BY CLARIFIER MANUFACTURER PRIOR TO INSTALLING ANY WORK.
- ALL CLARIFIERS (NO. 1 TO 8) SHALL BE DEMOLISHED WITH A SHEAR PIN. REFER TO SPECIFICATION SECTION 45.4.2.21.
- ONLY WATER MAY BE PUMPED INTO SPLITTER BOX. NO SLUDGE/GRIT AND/OR TRASH/DEBRIS MAY BE PUMPED INTO SPLITTER BOX.

BRIDGE, FEEDWELL, RAKE ARM, AND SKIMMING ARM
SCALE: N.T.S.

PLAN VIEW
SCALE: N.T.S.

ILLUSTRATIVE SECTION
SCALE: N.T.S.

KEY NOTES:

- SANDBLAST AND COAT FEEDWELL AND SUPPORTS COMPONENTS.
- SANDBLAST AND COAT INFLUENT COLUMN.
- SANDBLAST AND COAT RAKE ARM.
- TESTING INDICATES THAT WALKWAY PAINT IS LEAD BASED.
- PRESSURE WASH AND COAT DUAL CLARIFIER DRIVE UNITS. (REFER TO NOTE 16)
- REPLACE WALKWAY/BRIDGE WITH A NEW WALKWAY/BRIDGE. CONTRACTOR IS RESPONSIBLE FOR PROPER DISPOSAL OF EXISTING CLARIFIER WALKWAY/BRIDGE.
- SANDBLAST AND COAT SQUARE CENTER TORQUE CAGE.
- REMOVE AND REPLACE STAINLESS STEEL SQUEEZE, TYP.
- REMOVE STEEL SCUM BAFFLE PLATE AND REPLACE WITH FRP SCUM BAFFLE PLATE AND SUPPORT.
- PRESSURE WASH AND CLEAN ALL WALLS AND FLOOR.
- STEEL PLATE BLADES TO REMAIN.
- REMOVE AND REPLACE WEIRS WITH FRP V-NOTCH WEIRS. THIS WORK REQUIRED ON CLARIFIERS No. 1-8.
- REMOVE AND REPLACE SCUM BOX.
- REMOVE AND REPLACE 6" SCUM BOX PIPE.
- REMOVE AND REPLACE SPINNING ARM AND SUPPORT.
- REMOVE AND REPLACE ALL GUSSET PLATES UNDER CENTER PLATFORM.
- REMOVE AND REPLACE ALL C CHANNELS AT CENTER FEEDWELL.
- SKIMMING ARM CONNECTIONS SHALL BE BOLTED FOR LEVELING, THEN WELDED. SEE SHEET M-02.

RULL GEAR PROTECTION

COVER/PROTECT BULL GEAR AND ALL EQUIPMENT/GEARMS ON AND WITHIN TURNABLE/INFLUENT COLUMN AREA BEFORE ANY SANDBLASTING SAWS AND THE FINDER SHALL INSPECT THE AREA BEFORE ANY SANDBLASTING CAN BEGIN. IF SAND ENTERS THE BULL GEAR/GEARS, CONTRACTOR IS REQUIRED TO CLEAN AND REPLACE OIL. THE CONTRACTOR WILL REPLACE ANYTHING DAMAGED BY SAND AT NO COST TO SAWS.

ACCESS TO PAINT ALL REQUIRED COMPONENTS AND AREAS IS LEFT TO CONTRACTOR'S MEANS AND METHODS

REVISIONS

NO.	REVISION	DATE	APPROVED	DATE

REVISIONS

STEVEN M. CLOUSE WRC
PRIMARY CLARIFIER
REHABILITATION
PRIMARY CLARIFIER
DEMOLITION/REHAB PLAN
AND SECTIONS (1 OF 2)

DATE/OPER: _____
SUBMITTED: _____
APPROVED: _____
SECT. NO. _____
DR. EG. _____

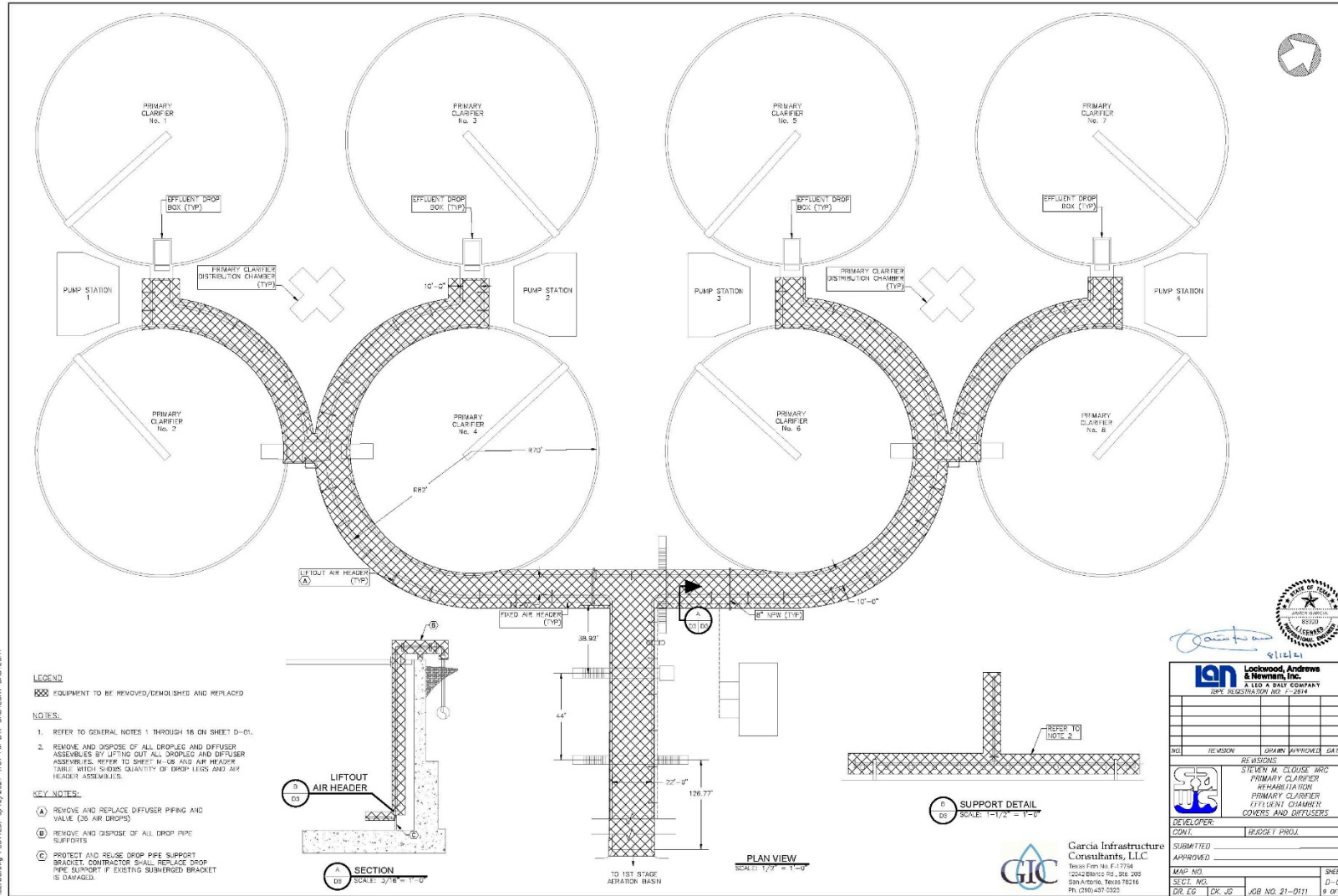
BUDGET PROJ.

SHEET
D-01
7 OF 28

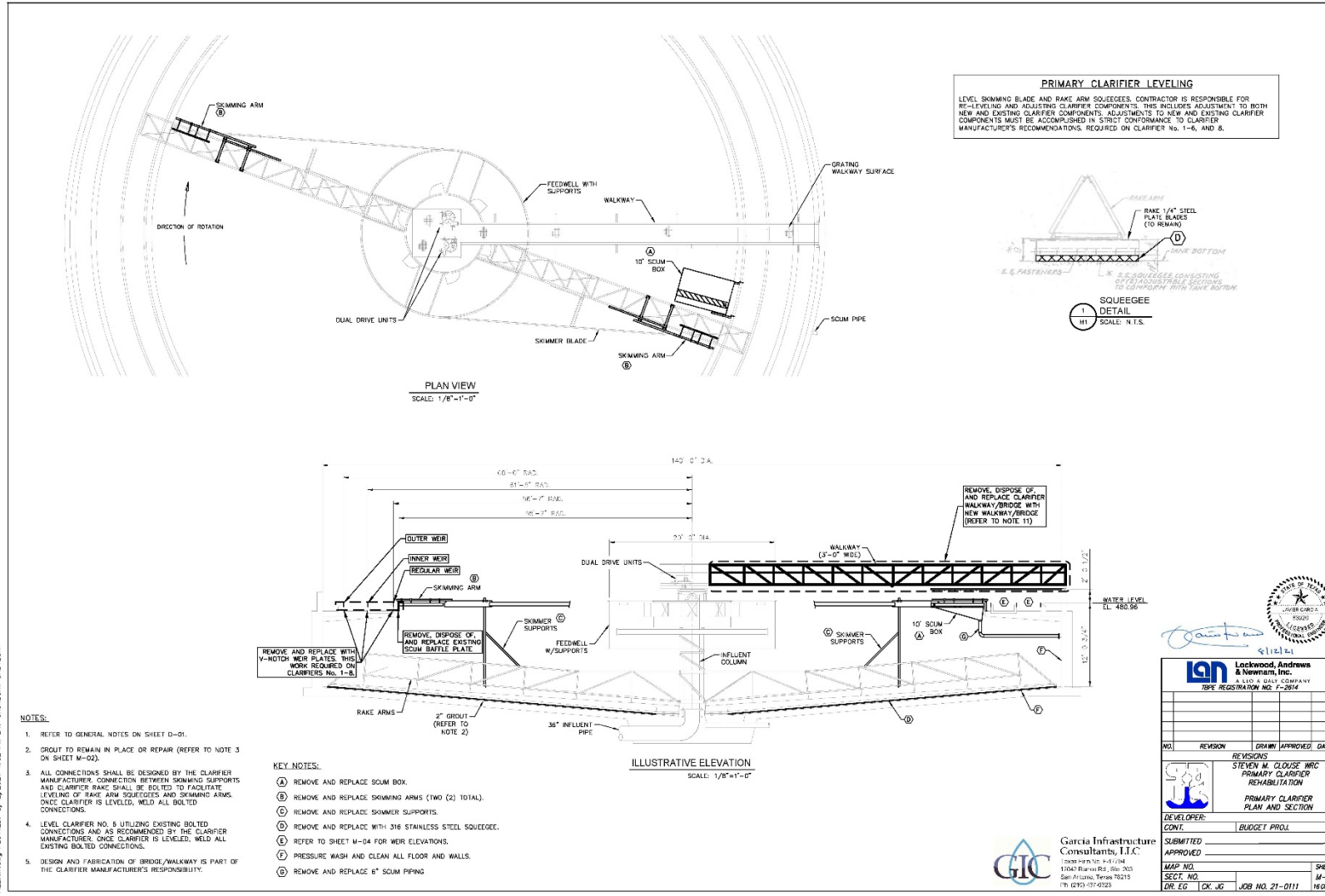
Lockwood, Andrews & Newnam, Inc.
A LEO & GASK COMPANY
RFP# REGISTRATION NO. F-2014

Garcia Infrastructure Consultants, LLC
Texas P.E. No. F-7754
12046-Brenham, 388-312
San Antonio, Texas 78215
PH: (210) 491-8029

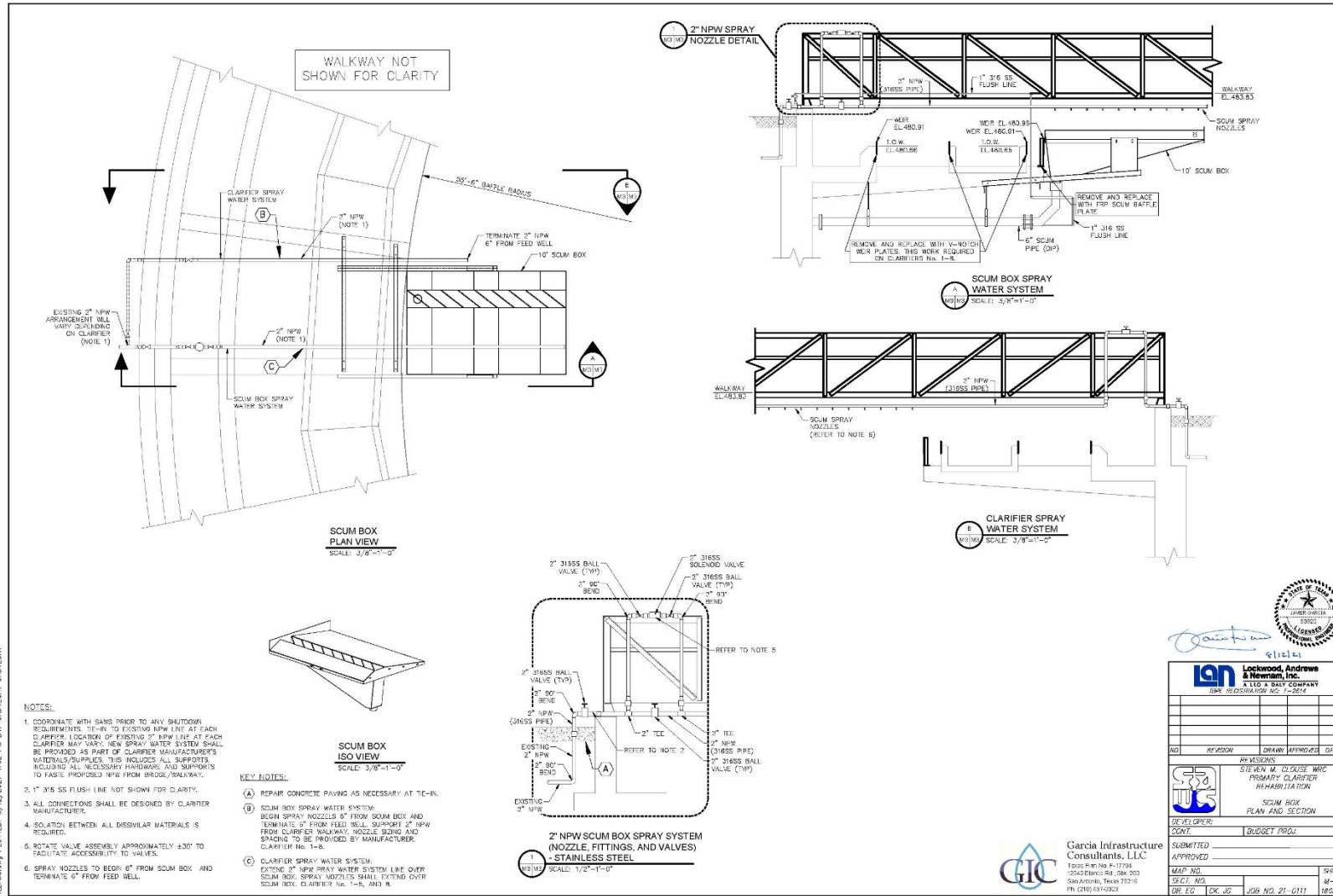
Project Details – Effluent Channel Aluminum Cover Demolition Plan



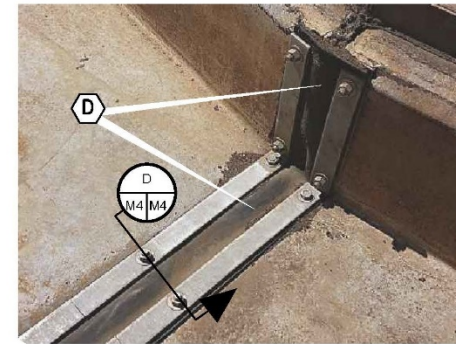
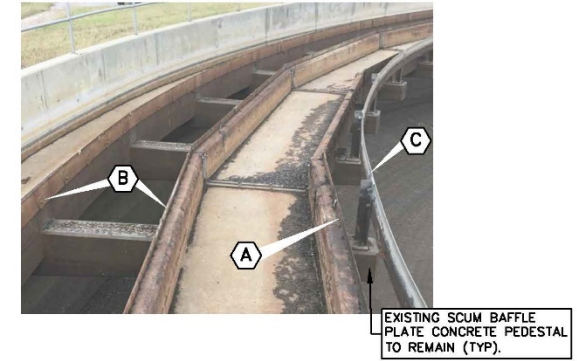
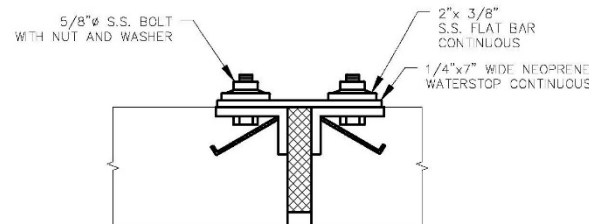
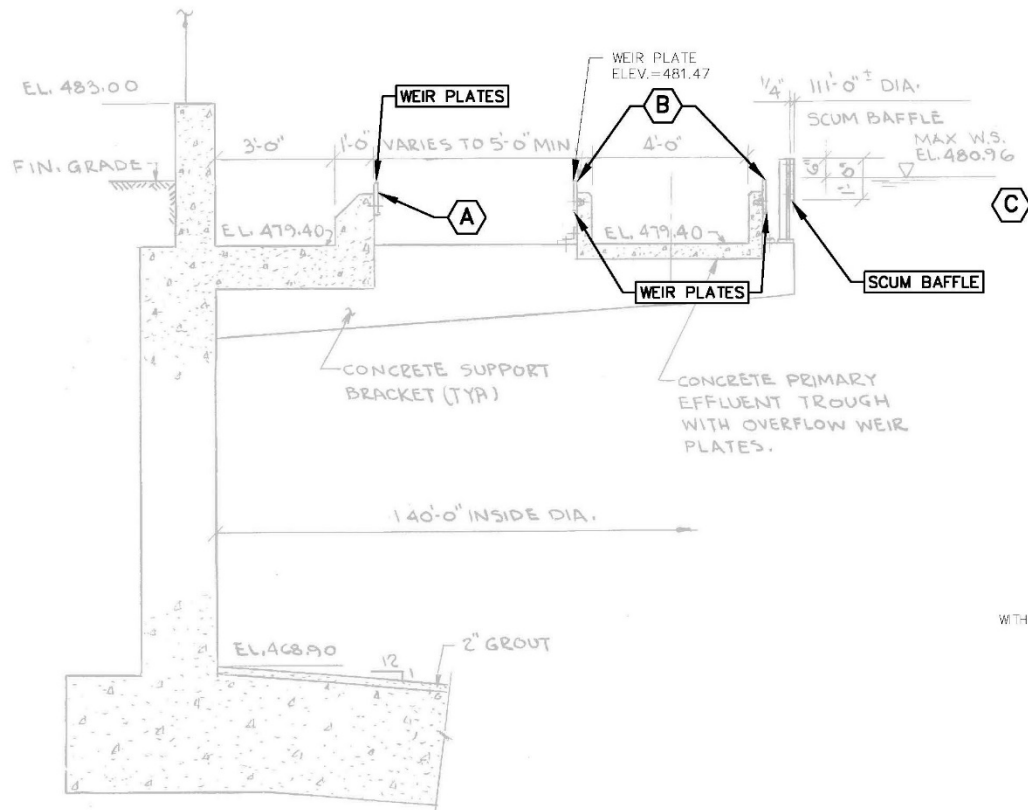
Project Details – Primary Clarifier Improvements



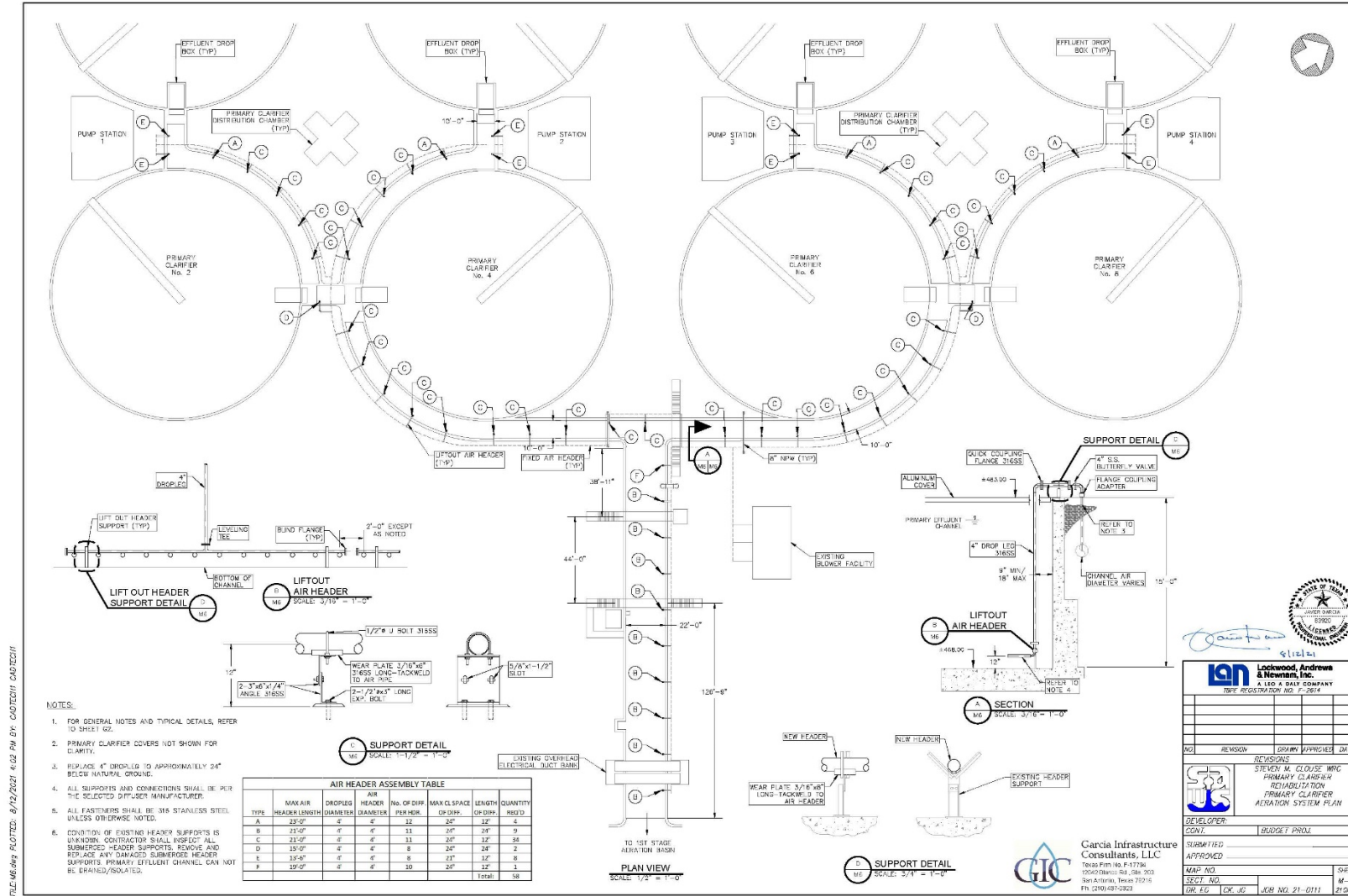
Project Details – Scum Box/Spray Water System Improvements



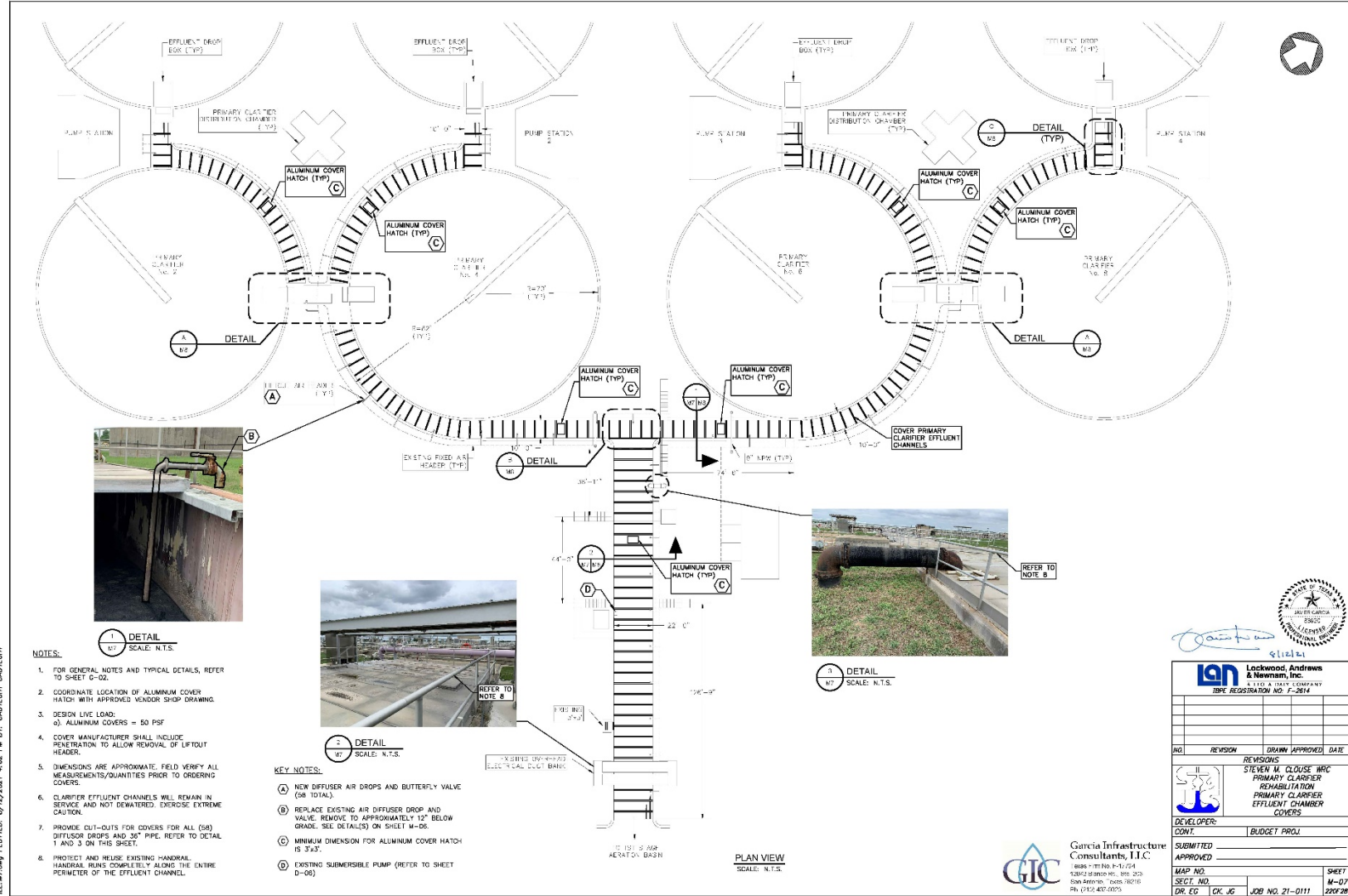
Project Details – Clarifier Weir Plate and Scum Baffle Improvements



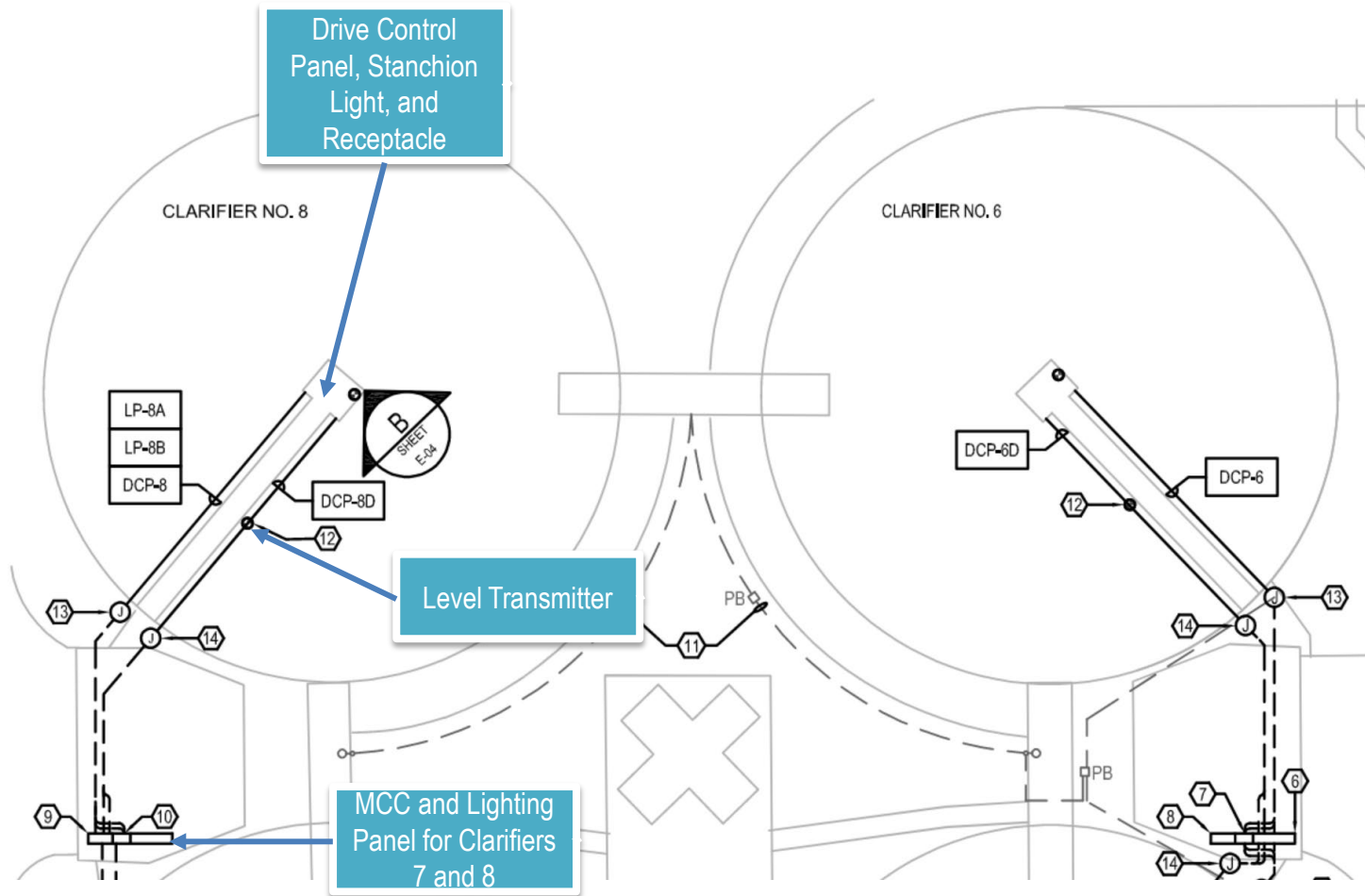
Project Details – Primary Clarifier Aeration System Improvements



Project Details – Effluent Channel Aluminum Cover Improvements



Project Details - Electrical and Instrumentation and Controls



QUESTIONS?

*Reminder: Oral **statements or discussion** during the pre-bid meeting today **will not be binding**, nor will it change or affect the terms or conditions within the Plans and Specifications of this Project. Changes, if any, will be addressed in writing only via an Addendum.*

Steven M. Clouse WRC Primary Clarifier Rehabilitation Project

Eric Eckols P.E.

Project Engineer

Stella Manzello

Contract Administrator

Marisol V. Robles

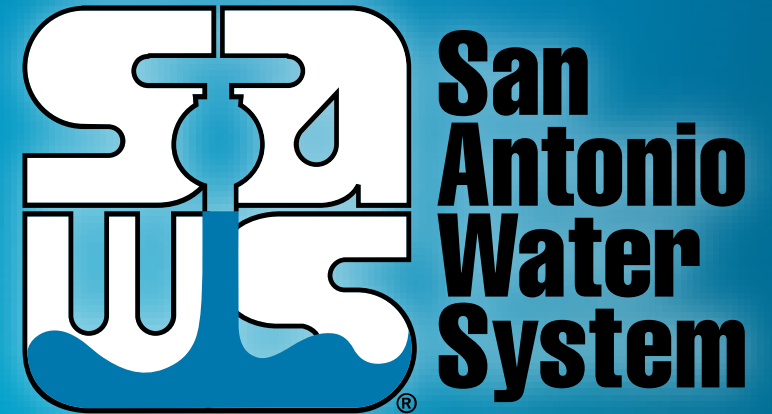
SMWVB Program Manager, SAWS

Javier Garcia, P.E.

Project Engineer of Record, GIC

Gaspar Garcia, P.E.

Project Engineer of Record, LAN



Mandatory Pre-Bid Meeting

August 27, 2021 – 10:00 AM

MAKING SAN ANTONIO
WATERFUL 